

elevate

elegance

enhance



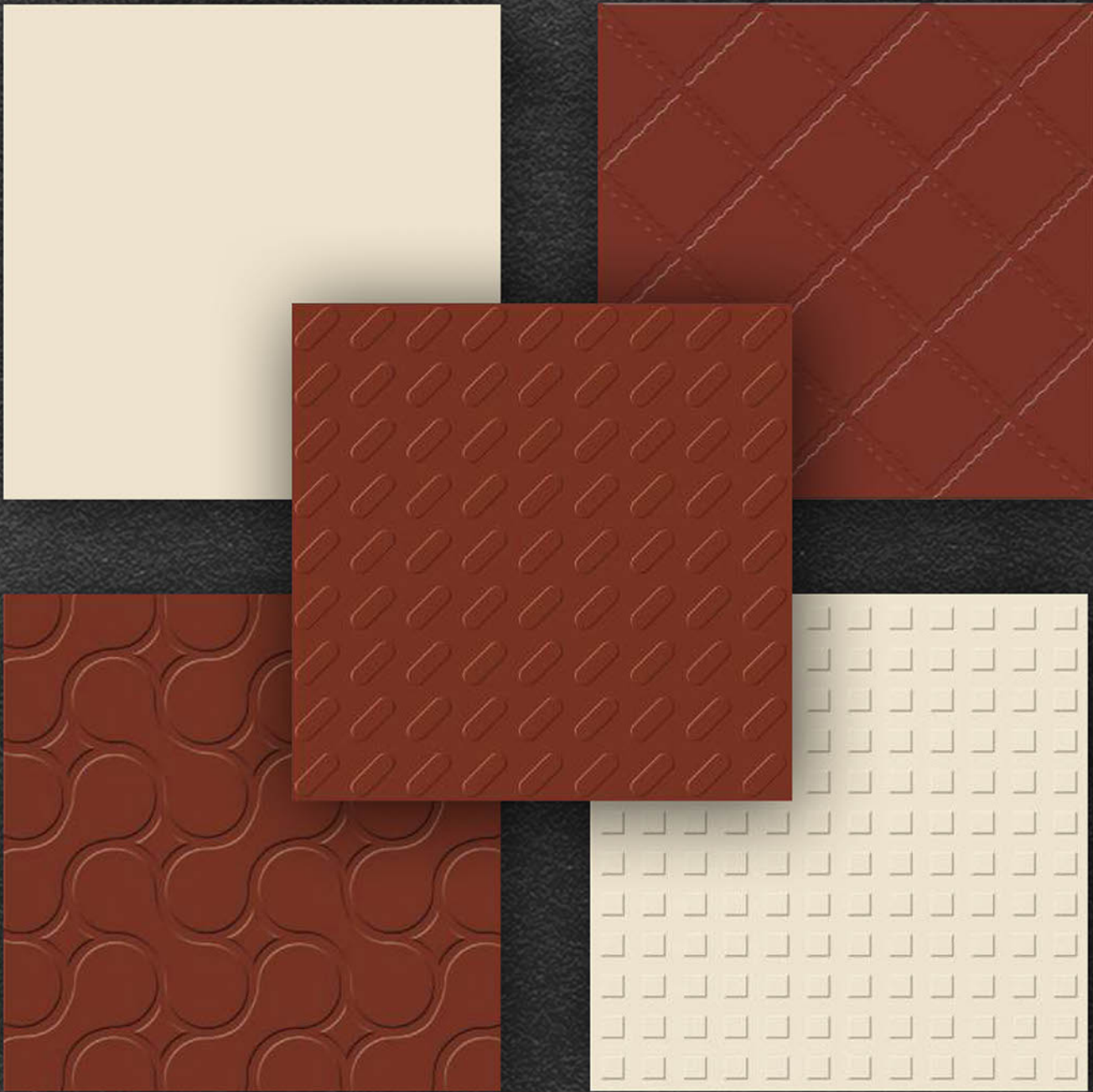
ULTUX GLOBAL
THE ULTRA LUXURY



ULTUX GLOBAL
THE ULTRA LUXURY

Company Profile

As India's largest ceramics, porcelain tiles and sanitary ware manufacturer, we've been exporting premium products for over 12 years to 14+ countries. Using top-notch technology, we ensure best quality, timely delivery, and economical prices, making luxury accessible to all. our tagline, 'The Ultra Luxury' is our commitment to elevate every space. We prioritize customer satisfaction- Connect with us 24/7 and let's achieve excellence together! "



300X300MM

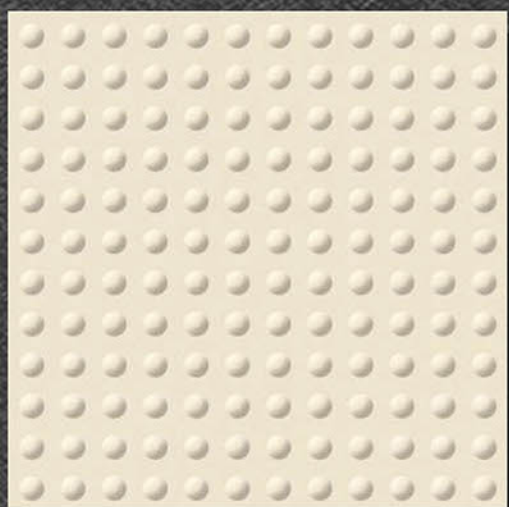
300mm x 300mm
FULL BODY
VITRIFIED PARKING TILES



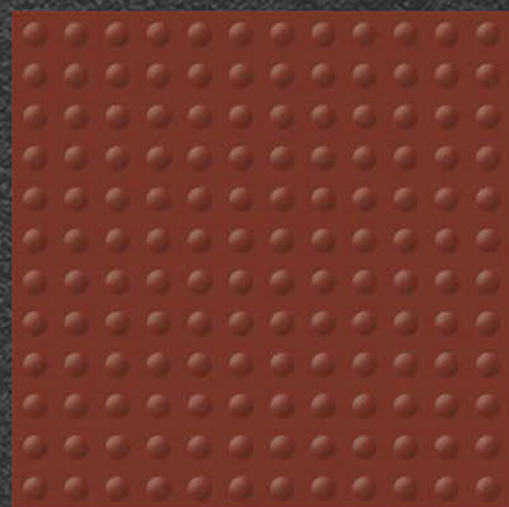
I - PLAIN



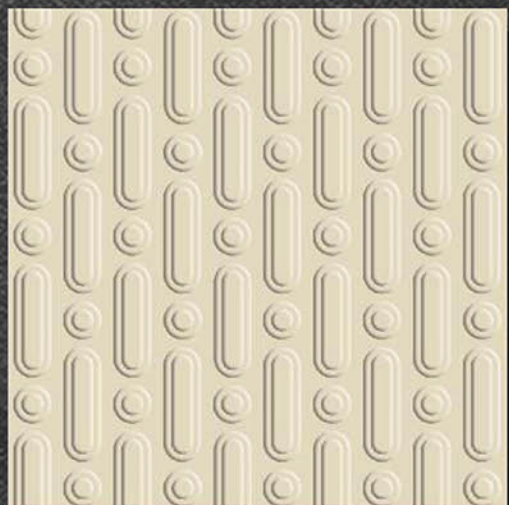
T - PLAIN



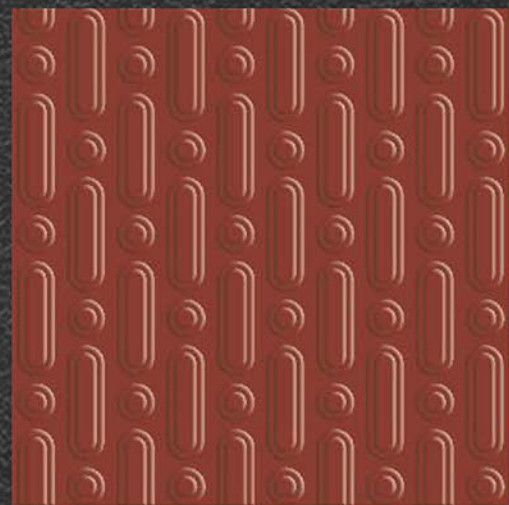
I - AQUA



T - AQUA



I - BULLET



T - BULLET



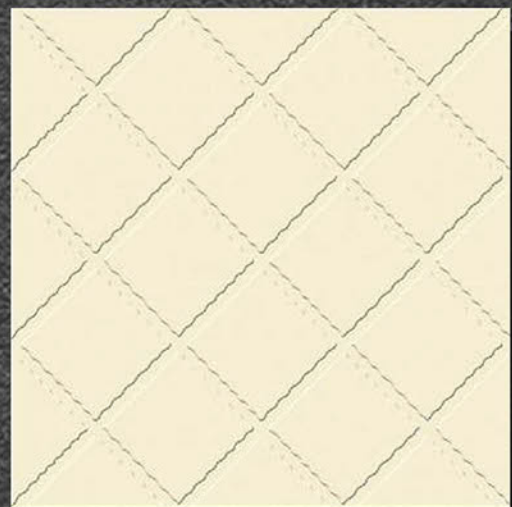
I - BIG CHECKRED



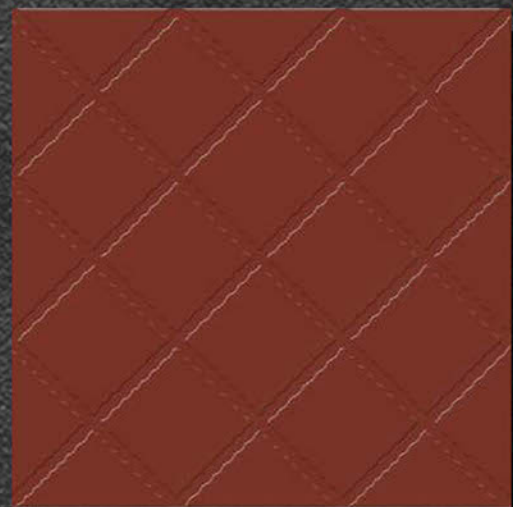
T - BIG CHECKRED



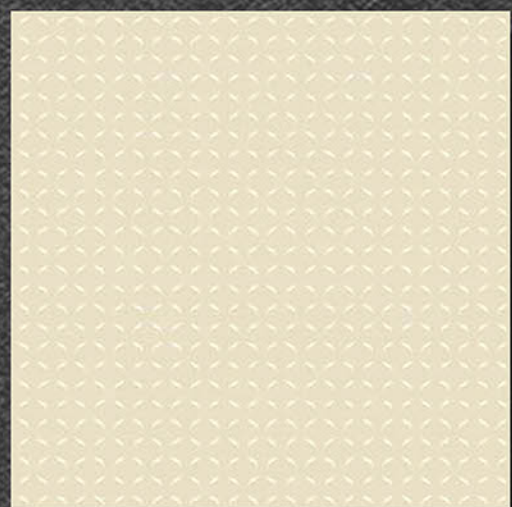
300mm x 300mm
FULL BODY
VITRIFIED PARKING TILES



I - CROSS SQUARE



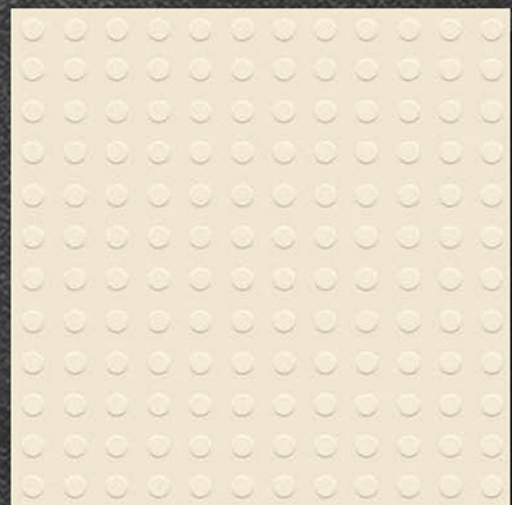
T - CROSS SQUARE



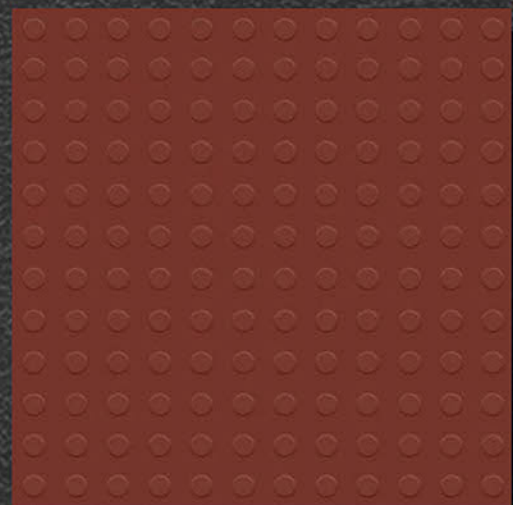
I - CHECKRED



T - CHECKRED



I - DOTS



T - DOTS



I - WAVY



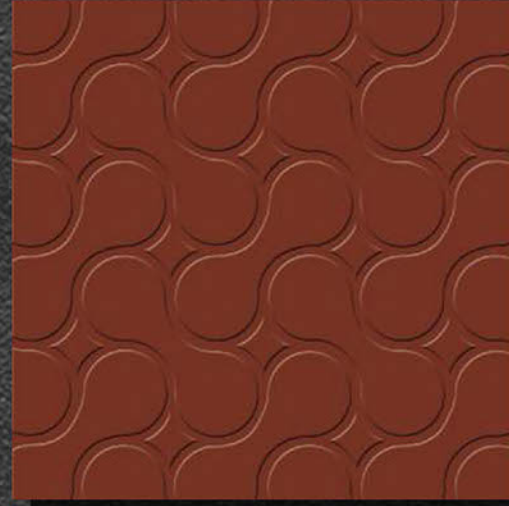
T - WAVY



300mm x 300mm
FULL BODY
VITRIFIED PARKING TILES



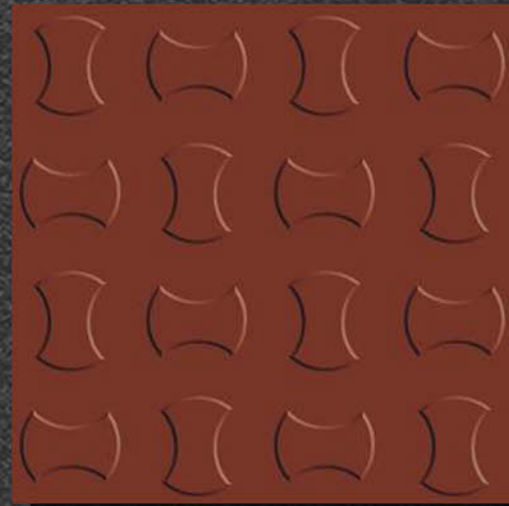
I - DAMRU



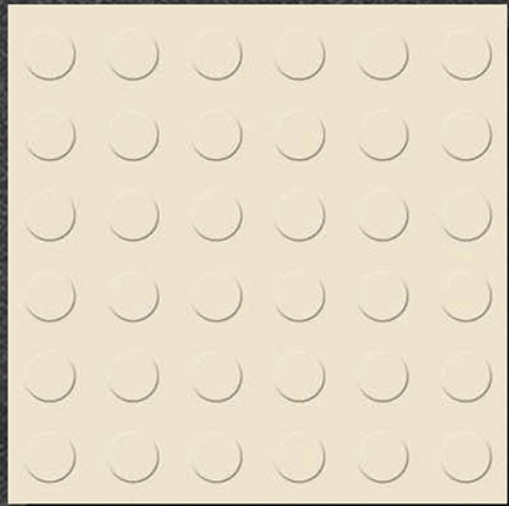
T - DAMRU



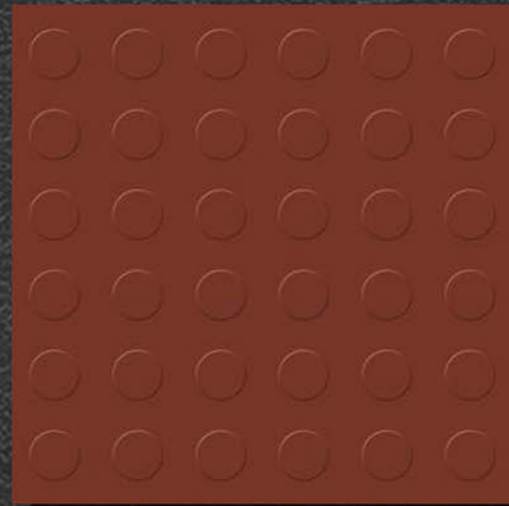
I - NEW HEXA



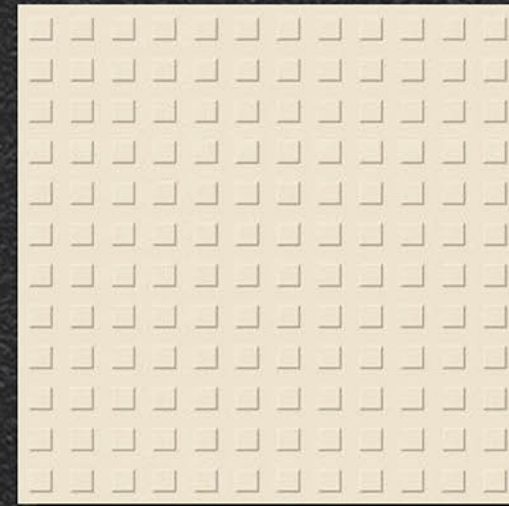
T - NEW HEXA



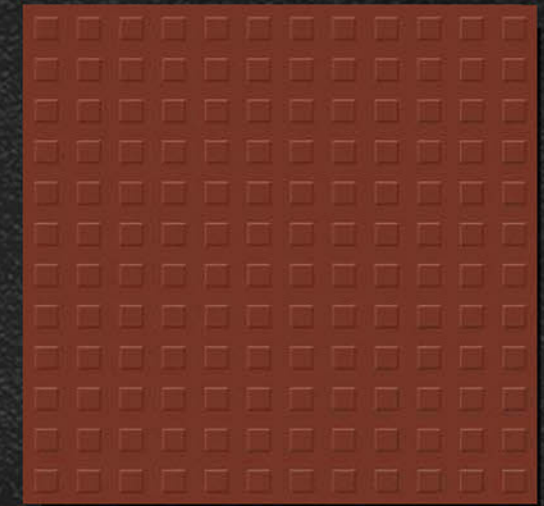
I - NEW COIN



T - NEW COIN



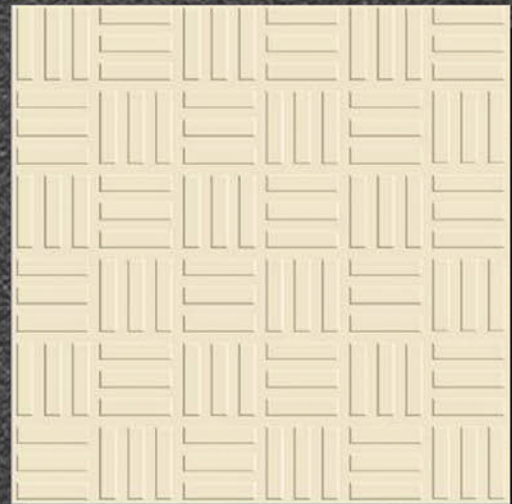
I - NEW CUBE



T - NEW CUBE



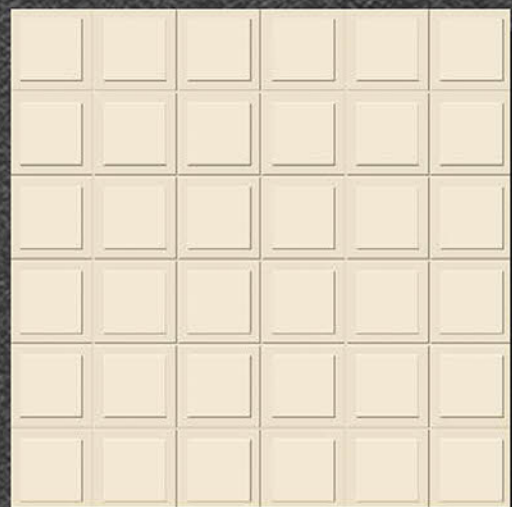
300mm x 300mm
FULL BODY
VITRIFIED PARKING TILES



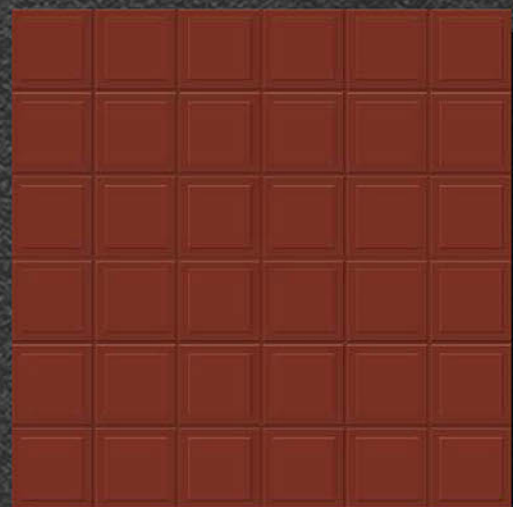
I - METRIX



T - METRIX



I - METRO



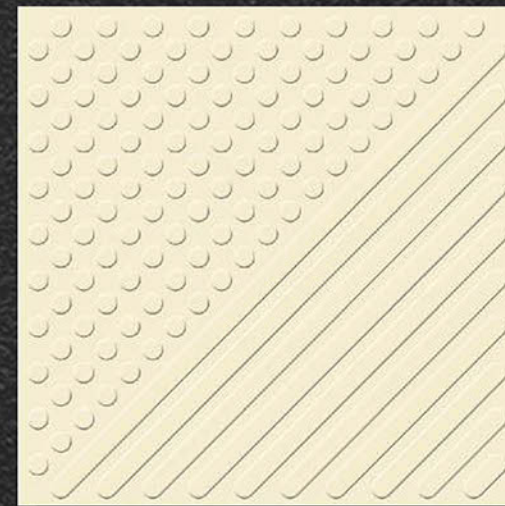
T - METRO



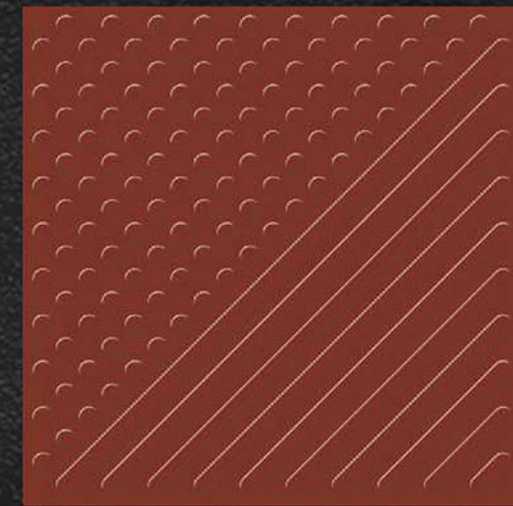
I - ONIX



T - ONIX



I - PAMESHA



T - PAMESHA



300mm x 300mm
FULL BODY
VITRIFIED PARKING TILES



I - REVLON



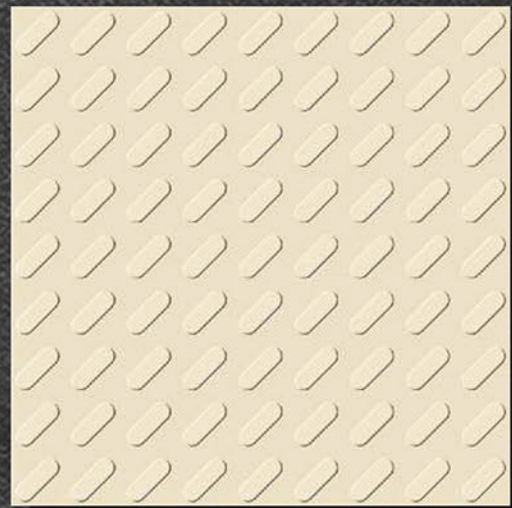
T - REVLON



I - STONE



T - STONE



I - CAPSULE



T - CAPSULE





ULTUX GLOBAL
THE ULTRA LUXURY



+91 82009-53712

www.ultuxglobal.com

info@ultuxglobal.com