

elevate

elegance

enhance



ULTUX GLOBAL
THE ULTRA LUXURY



ULTUX GLOBAL
THE ULTRA LUXURY

Company Profile

As India's largest ceramics, porcelain tiles and sanitary ware manufacturer, we've been exporting premium products for over 12 years to 14+ countries. Using top-notch technology, we ensure best quality, timely delivery, and economical prices, making luxury accessible to all. our tagline, 'The Ultra Luxury' is our commitment to elevate every space. We prioritize customer satisfaction- Connect with us 24/7 and let's achieve excellence together! "

2024

600 X 600 mm
Porcelain tiles



MORCCAN MATT SERIES

APRICOT
GVT PORCELAIN TILES



Moroccan Multi



600 X 600 mm
Porcelain tiles

APRICOT
GVT PORCELAIN TILES

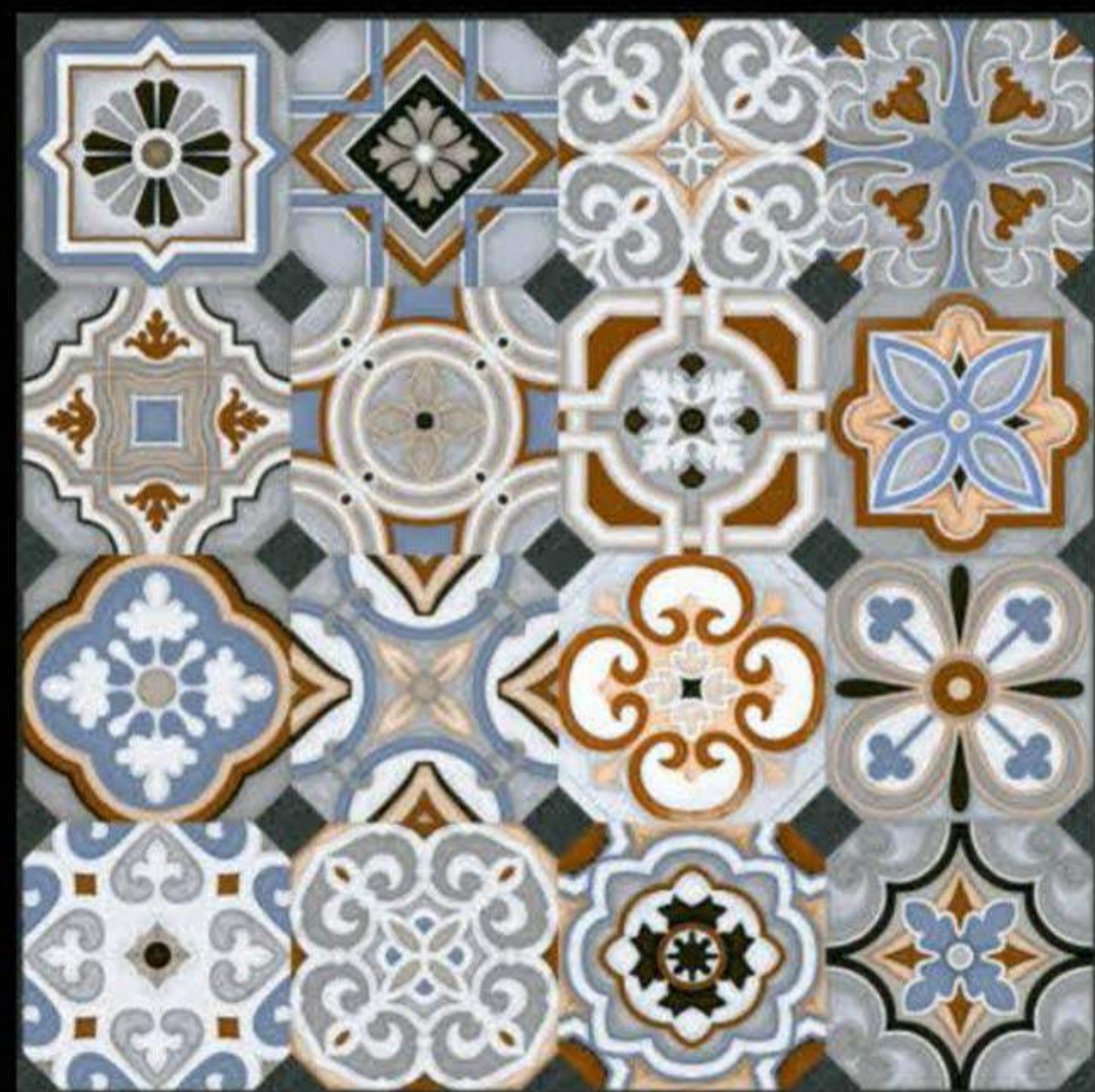


Antique Beige



600 X 600 mm
Porcelain tiles

APRICOT
GVT PORCELAIN TILES

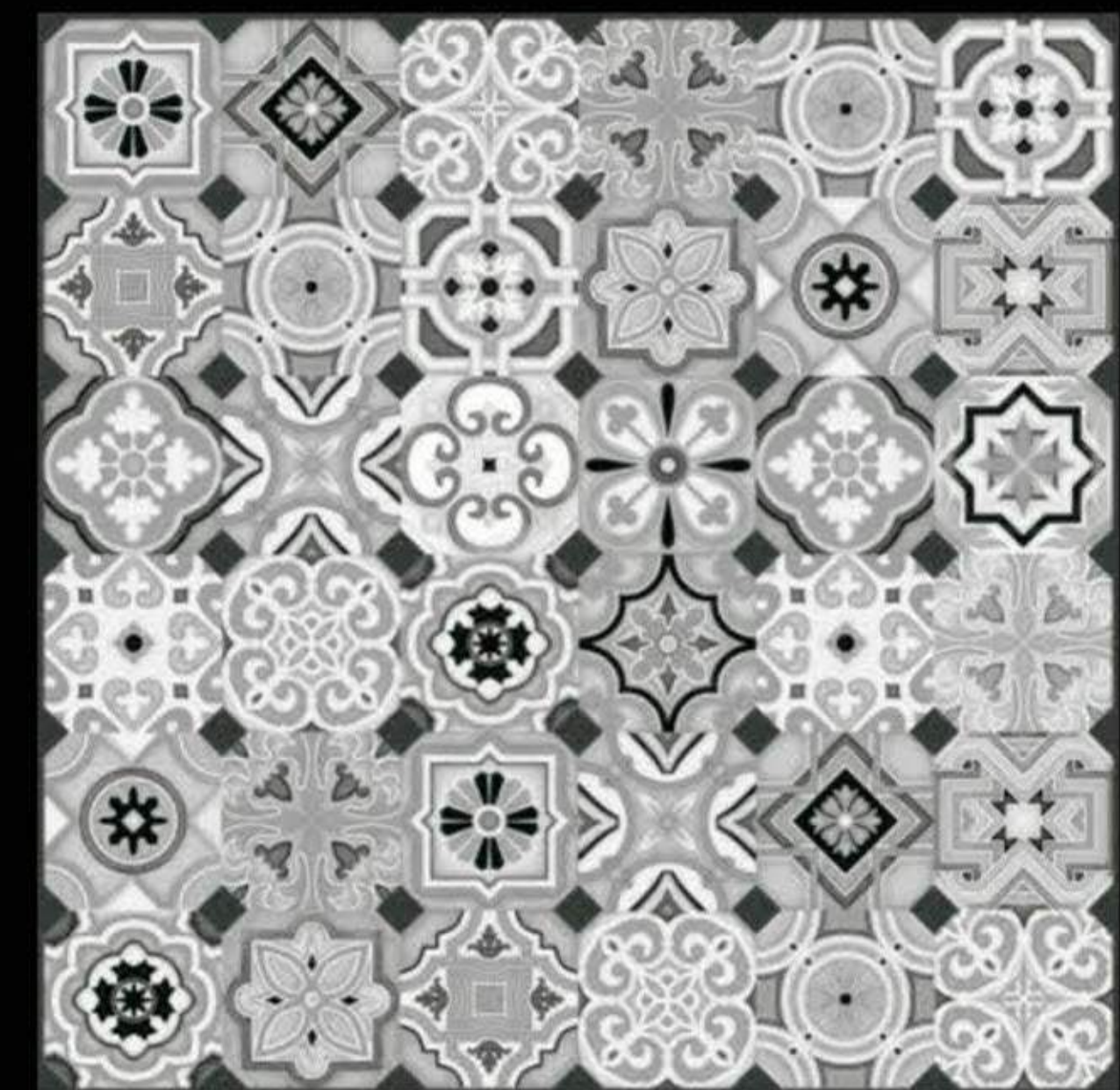


Antique blue



600 X 600 mm
Porcelain tiles

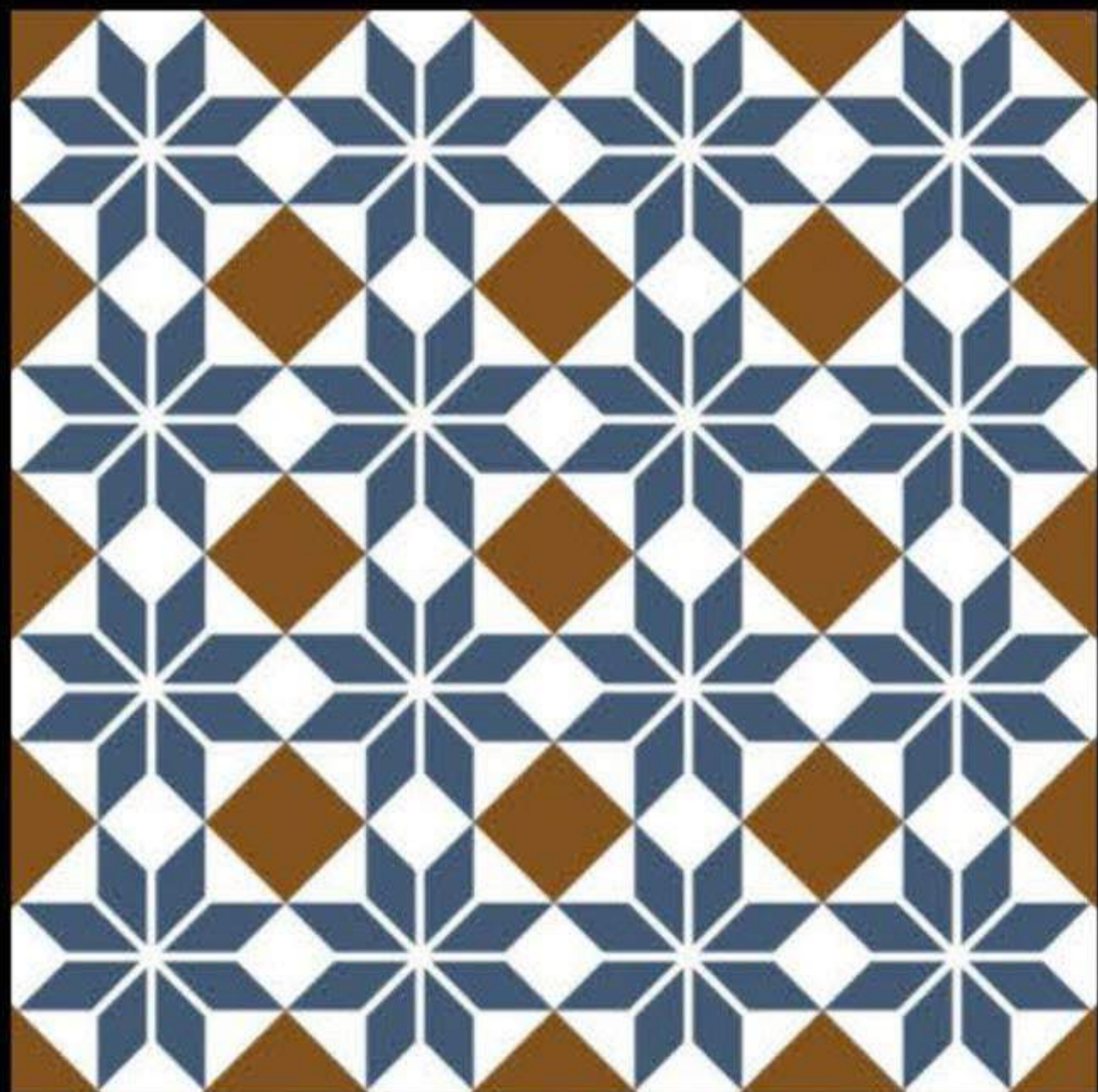
APRICOT
GVT PORCELAIN TILES



Antique grey



600 X 600 mm
Porcelain tiles



Fabula Blue



600 X 600 mm
Porcelain tiles

APRICOT
GVT PORCELAIN TILES



Fabula Gris

600 X 600 mm
Porcelain tiles



APRICOT
GVT PORCELAIN TILES



MILTON AZUL

600 X 600 mm
Porcelain tiles



APRICOT
GVT PORCELAIN TILES

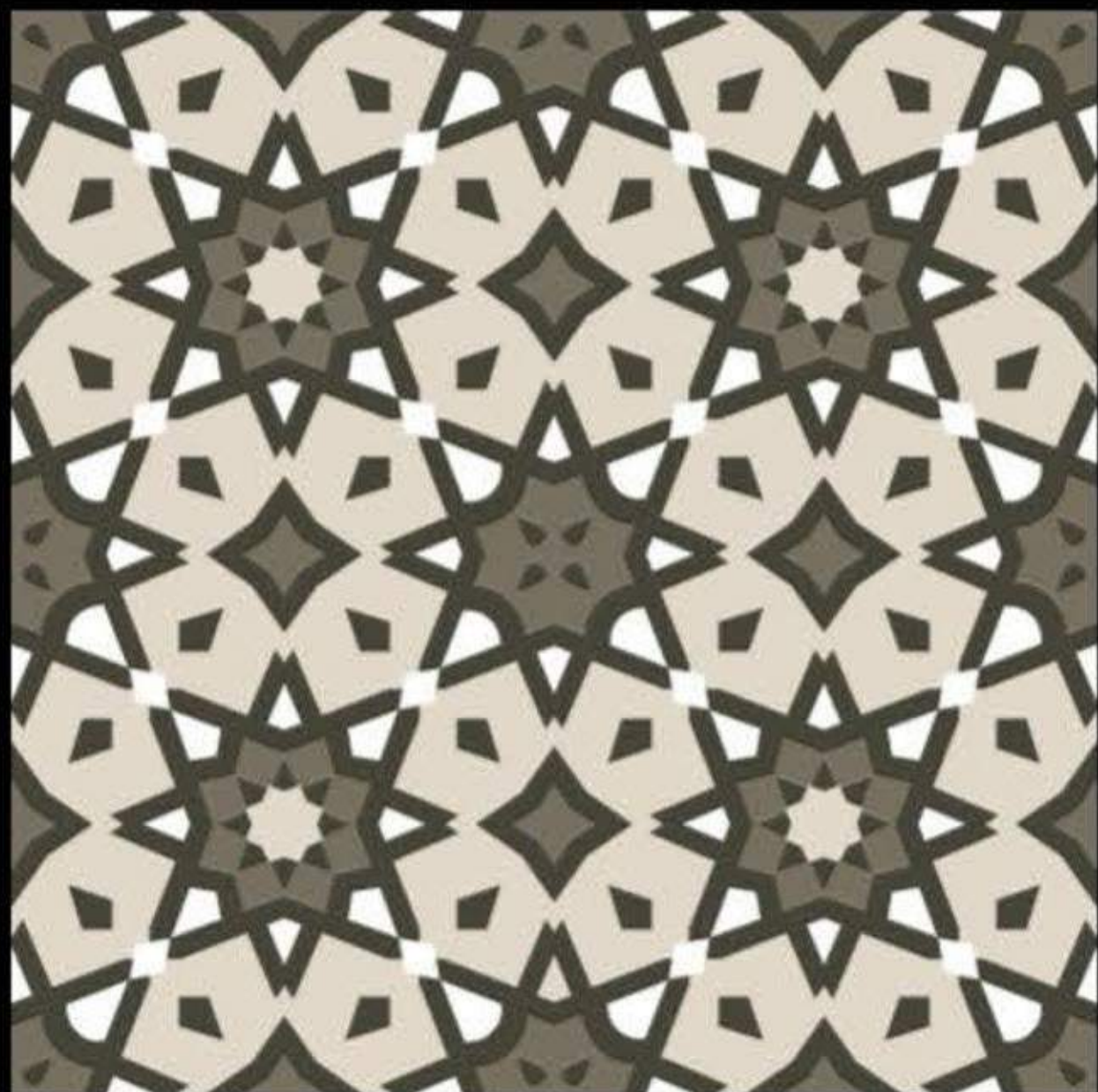


Moroccan Green



600 X 600 mm
Porcelain tiles

APRICOT
GVT PORCELAIN TILES



Moroccan verde



600 X 600 mm
Porcelain tiles

APRICOT
GVT PORCELAIN TILES



Toronto crema HL

600 X 600 mm
Porcelain tiles



| Particulars | Standard as per ISO 13006/EN 176 | OUR VALUE | METHOD OF TESTING |
|--------------------------|----------------------------------|--------------|--------------------|
| Deviation in length | ± 0.50% | ± 0.3% | EN 98 |
| Deviation in Thickness | ± 5% | ±3% | EN 98 |
| Straightness Of Sides | ± 0.5% | ± 0.3% | EN 98 |
| Rectangularity | ± 0.6% | ± 0.3% | EN 98 |
| Surface Flatness | ± 0.5% | ± 0.3% | EN 98 |
| Water Absorption | < 3 | 3 < 4 | ISO 10945.3 EN 98 |
| Mohs Hardness | > 5 | > 5 | EN 101 |
| Flexural Strength | > 35 N/Sq.mm | > 39 N/Sq.mm | — |
| Abrasion Resistance | As specified by Manufacturer | PE 3 | ISO 10545.6 EN 102 |
| Frost Resistance | Frost Proof | Frost Proof | ISO 10534 - 11 |
| Chemical Resistance | No Damage | No Damage | ISO 10534 - 18 |
| Thermal Shock Resistance | No Damage | No Damage | ISO 10545- 9 |
| Colour Resistance | No Damage | No Damage | — |
| Stain Resistance | Resistance | Stain Proof | ISO 10545 - 14 |
| Moisture Expansion | Nill | Nill | ISO 10545 - 10 |
| Crazing Resistance | Min 2 Cycle | Min 4 Cycle | — |

Note
Colour shown are as accurate as the limitations of the printing process will allow. Prospective customers are advised to inspect a sample of the tile before ordering. Every effort has been made to ensure the accuracy of the information given. However, the company reserves the right to change the specification without prior notice. Sometimes variations in shade or size being inherent to ceramic industry may occur. It is suggest to check the tiles before purchase and laying as the company dose not accept responsibility once the tiles are laid.

PACKING DETAIL

| Size | Thickness | No.OF Tiles | Area Approx. | Weight Approx. |
|------------|-----------|-------------|---------------|----------------|
| 600x600 mm | 9 mm | 4 Pcs. | 1.44 Sq. Mtr. | 25.5 Kg |

UTILITY OF FLOOR TILES





ULTUX GLOBAL
THE ULTRA LUXURY



+91 82009-53712

www.ultuxglobal.com

info@ultuxglobal.com